

# HANGING MODULAR SYSTEM



## Available modules

- Available heights: 1m & 1.5m

M/H/0001 0.5x0.5x1m - Corner



M/H/0029 0.5x1m - Extension



M/H/0002 1x1m - Extension



M/H/0003 2x1m - Extension



M/H/0004 0.5x1m - Ending Set



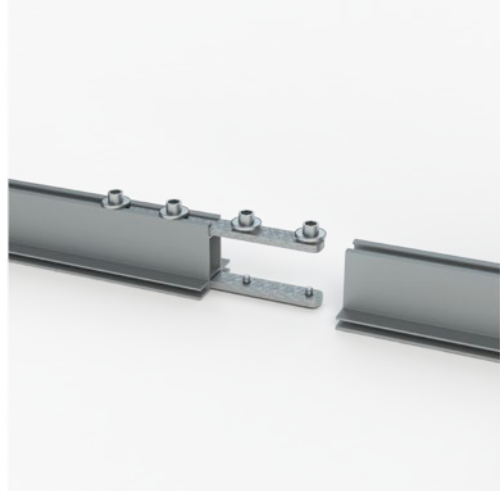
0.5x0.5x1m - Round  $r=0.5m$



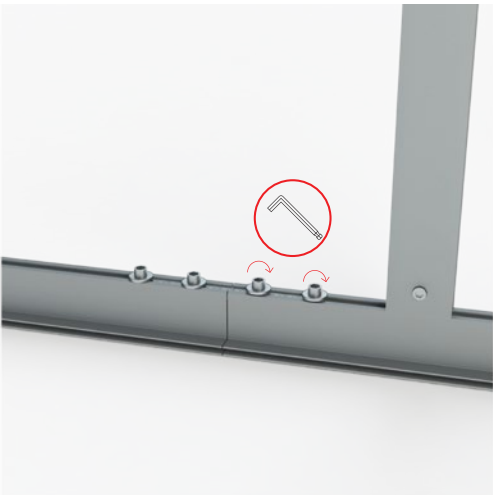
Hanging Clip



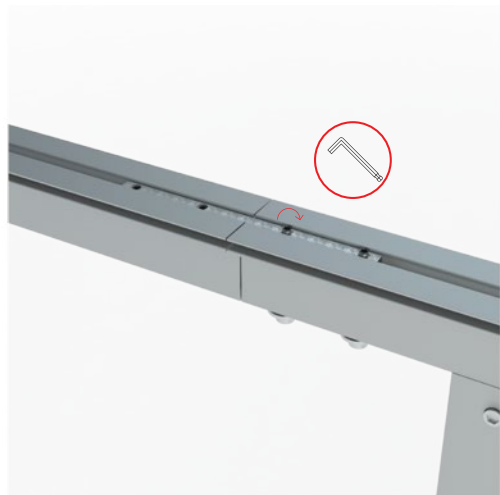
Connection



Fastening - 1



Fastening - 2



Printing view (outside)



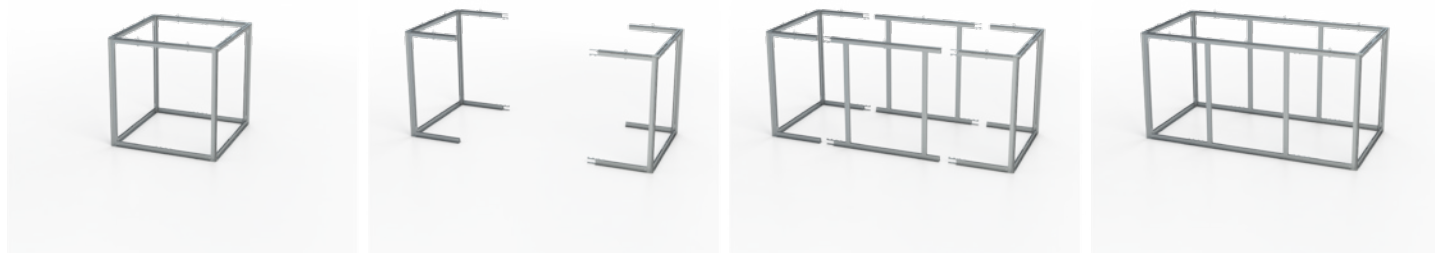
Printing view (inside)



## Possibilities

- No maximum length restriction

From 1x1x1m up to 1x2x1m



From 1x2x1m up to 1x4x1m



From 1x4x1m up to 2x4x1m



Size 2x4x1m

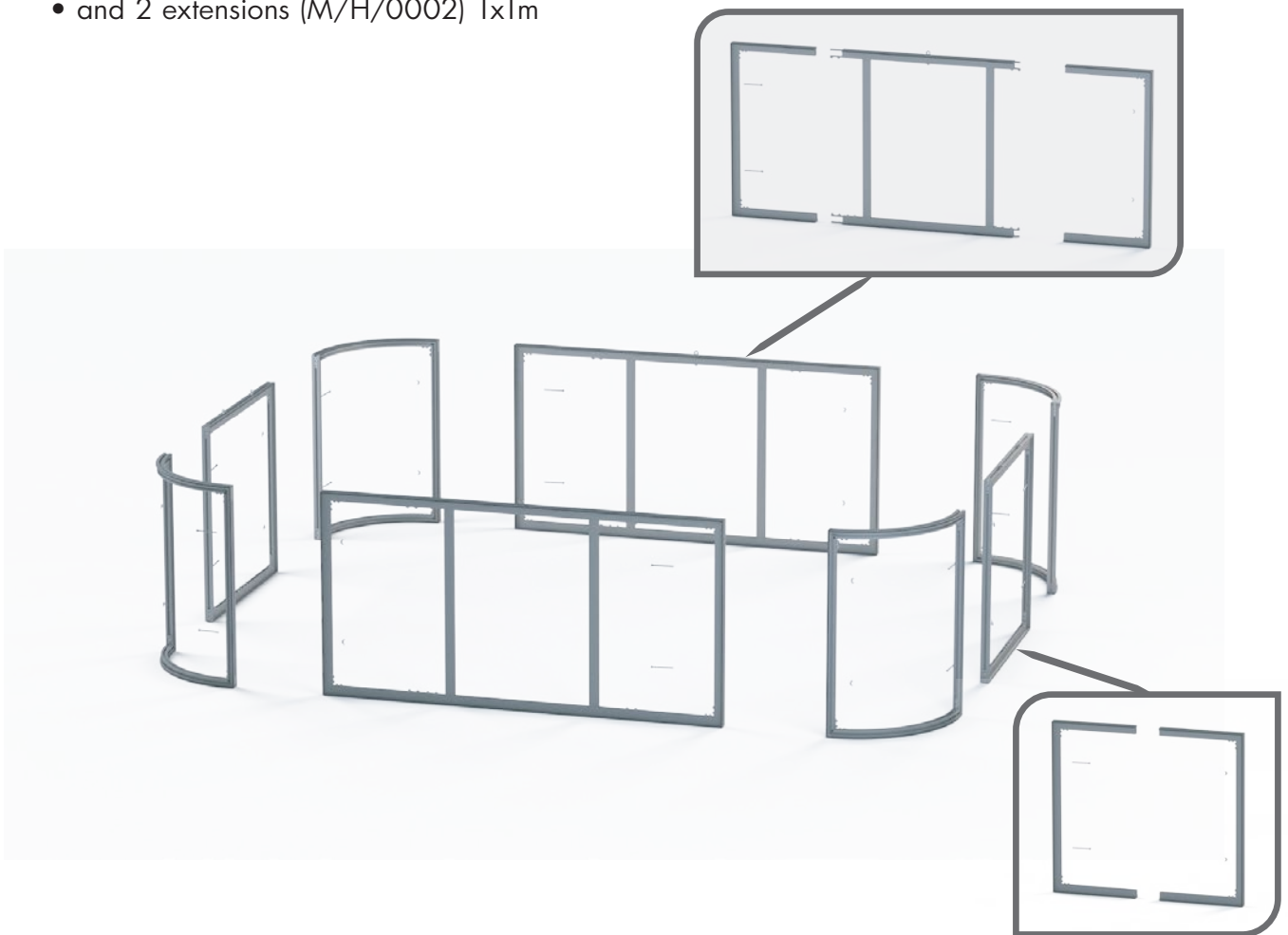


## Rounded rectangle

### Rounded rectangle 3x2x1m with r50

It consists of:

- 4 Round parts (r)0.5x1m
- 8 Ending Set (M/H/0004) 0.5x1m
- and 2 extensions (M/H/0002) 1x1m



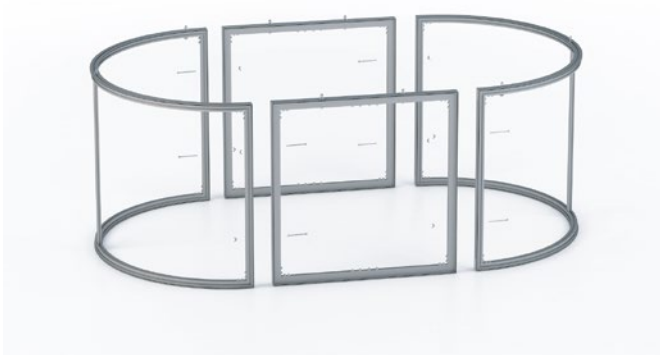
## Cylindered

- Available diameters: 1.5m, 2m, 3m, 4m & 5m
- Available heights: 1m & 1.5m

150(d)x100(h)cm consisting of 2 parts 0.75(r)m



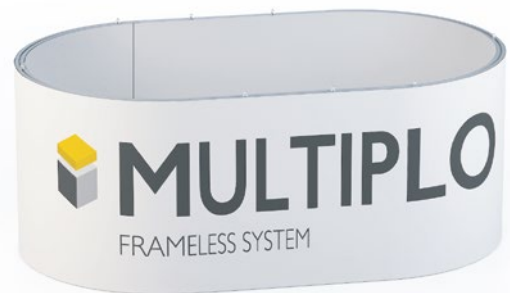
Rounded rectangle 1.5x2.5x1m with 0.75(r)m



200(d)x100(h)cm consisting of 4 parts 1(r)m

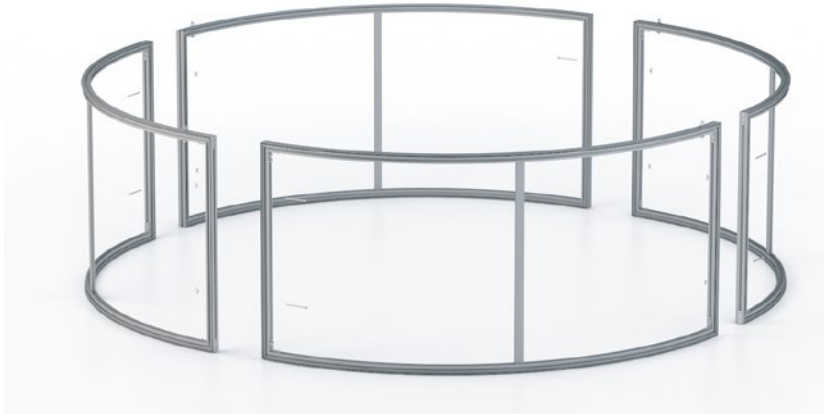


Rounded rectangle 4x3x1m with 1(r)m

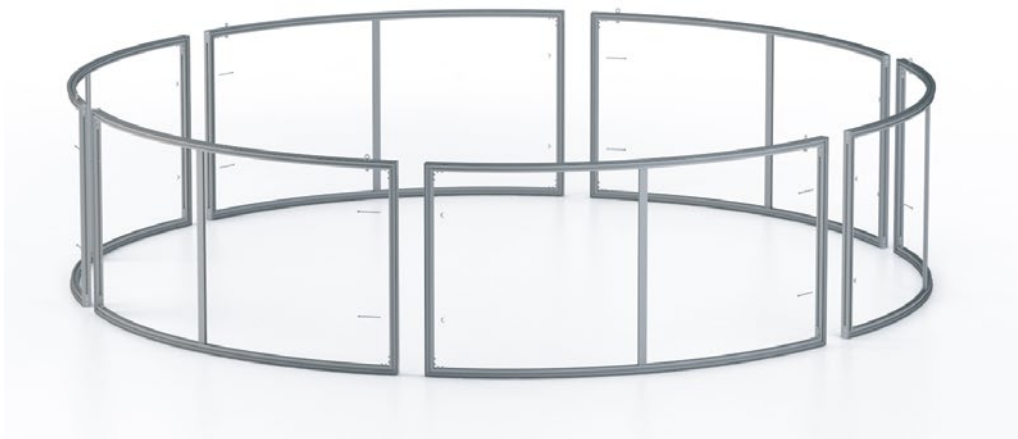


## Cylindered

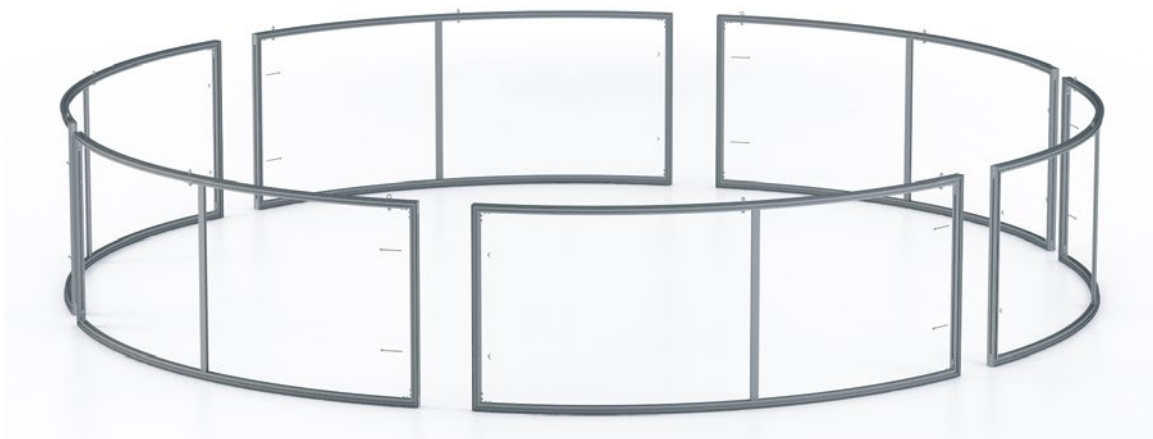
300(d)x100(h)cm consisting of 4 parts 1.5(r)m



400(d)x100(h)cm consisting of 6 parts 2(r)m



500(d)x100(h)cm consisting of 6 parts 2.5(r)m



## Available LED modules

M/H/0009 0.5x0.5x1m - Corner



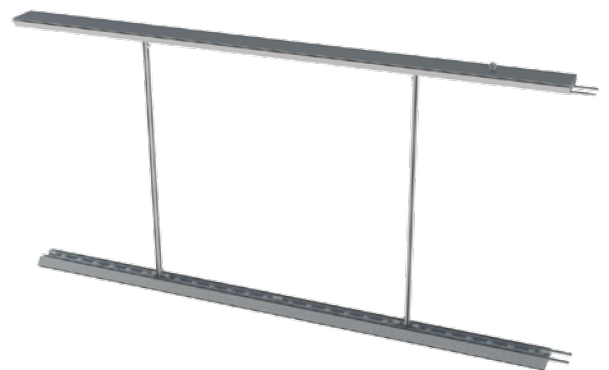
M/H/0010 1x1m



M/H/0031 1.5x1m



M/H/0011 2x1m



M/H/0012 0.5x1m - Ending set



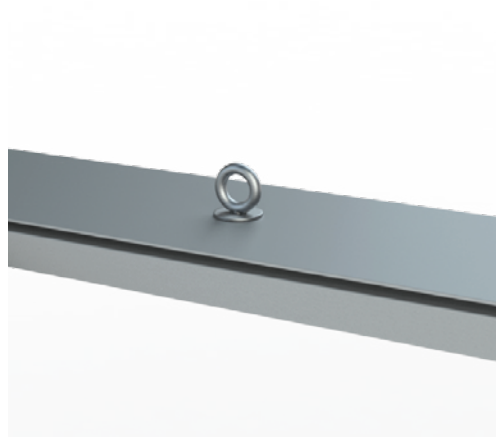
- Each module has its own power supply meaning that every size from 1 to 25 meters is in our scope.
- Available heights: 1m & 1.5m



Fastening



Hanging Clip



Printing view (outside)



Printing view (inside)



## Applications





## Cylindred Applications



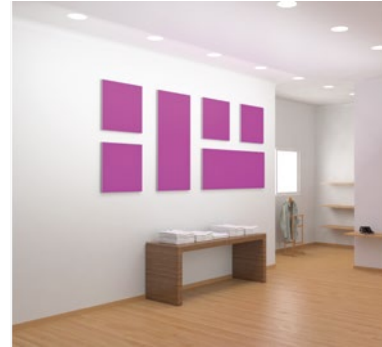
## MULTIPLO PRODUCTS



BACKDROPS



VOLUMES



WALL PANELS



EXHIBITION BOOTHS



PROMO STANDS



CEILING PANELS



▲ 23 Notara str, Ag. Dimitrios Athens 173 43

T +30 210 9753 140

[www.multiplo.gr](http://www.multiplo.gr)

[www.evin.gr](http://www.evin.gr)